

1. Use the standard results for $\sum_{r=1}^n r$ and for $\sum_{r=1}^n r^3$ to show that, for all positive integers n ,

$$\sum_{r=1}^n r(r^2 - 3) = \frac{n}{4}(n+a)(n+b)(n+c)$$

where a, b and c are integers to be found. (4)

$$\text{LHS} = \sum_{r=1}^n r(r^2 - 3) = \sum_{r=1}^n r^3 - 3r$$

$$= \sum_{r=1}^n r^3 - 3 \sum_{r=1}^n r$$

$$= \frac{n^2}{4}(n+1)^2 - \frac{3n}{2}(n+1)$$

$$= \frac{n}{4}(n+1)[n(n+1) - 6]$$

$$= \frac{n}{4}(n+1)(n^2 + n - 6)$$

$$= \frac{n}{4}(n+1)(n+3)(n-2)$$

$$a = 1$$

$$b = 3$$

$$c = -2$$

DO NOT WRITE IN THIS AREA

DO NOT WRITE IN THIS AREA

DO NOT WRITE IN THIS AREA



2. A parabola P has cartesian equation $y^2 = 28x$. The point S is the focus of the parabola P .

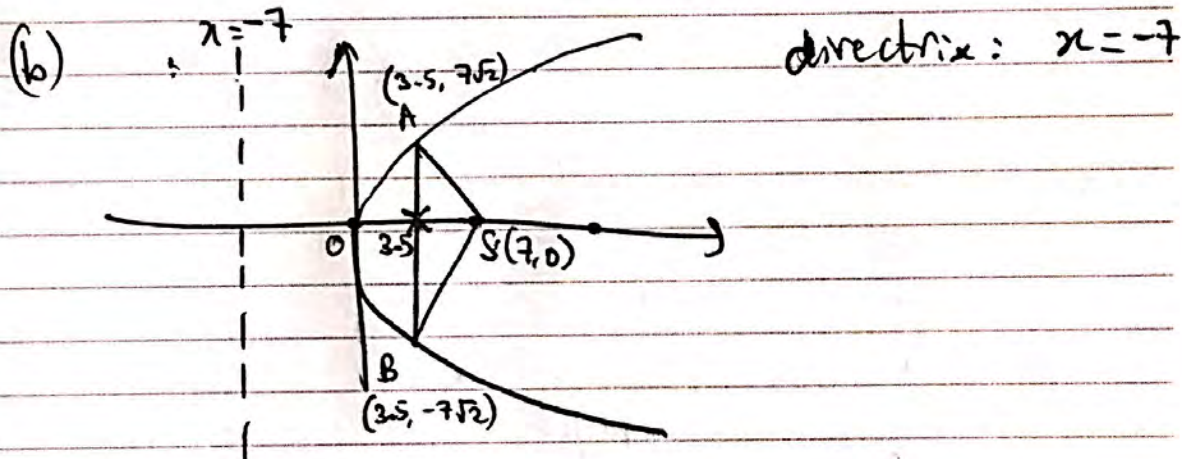
(a) Write down the coordinates of the point S . (1)

Points A and B lie on the parabola P . The line AB is parallel to the directrix of P and cuts the x -axis at the midpoint of OS , where O is the origin.

(b) Find the exact area of triangle ABS . (4)

$$(a) y^2 = 4 \times 7x$$

$$S: (7, 0)$$



$$x = 3.5 \Rightarrow y^2 = 98 \Rightarrow y = \pm 7\sqrt{2}$$

$$\text{Area} = \frac{1}{2} \times 14\sqrt{2} \times 3.5$$

$$= \frac{49\sqrt{2}}{2}$$

$$\therefore \text{Area } \triangle ABS = \frac{49\sqrt{2}}{2}$$

DO NOT WRITE IN THIS AREA

DO NOT WRITE IN THIS AREA

DO NOT WRITE IN THIS AREA



Leave blank

DO NOT WRITE IN THIS AREA

DO NOT WRITE IN THIS AREA

DO NOT WRITE IN THIS AREA

3.

$$x^2 + 3x^{-1} - 1$$

$$f(x) = x^2 + \frac{3}{x} - 1, \quad x < 0$$

The only real root, α , of the equation $f(x) = 0$ lies in the interval $[-2, -1]$.

- (a) Taking -1.5 as a first approximation to α , apply the Newton-Raphson procedure once to $f(x)$ to find a second approximation to α , giving your answer to 2 decimal places. (5)
- (b) Show that your answer to part (a) gives α correct to 2 decimal places. (2)

$$(a) f'(x) = 2x - 3x^{-2}$$

$$f(-1.5) = -\frac{3}{4}$$

$$f'(-1.5) = -\frac{13}{3}$$

$$\therefore x \approx -1.5 - \frac{f(-1.5)}{f'(-1.5)} = -\frac{87}{52}$$

$$\therefore \alpha \approx -1.67 \text{ (2dp)}$$

$$(b) f(-1.665) = -0.02957\dots$$

$$f(-1.675) = +0.014580\dots$$

\therefore There's a sign change in the interval $[-1.675, -1.665]$

$$\Rightarrow -1.675 < \alpha < -1.665$$

$$\therefore \alpha \approx -1.67 \text{ (2dp)}$$



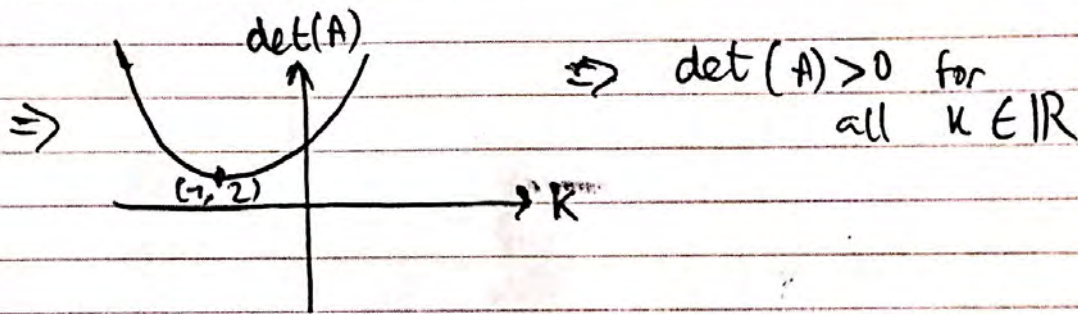
4. Given that

$$A = \begin{pmatrix} k & 3 \\ -1 & k+2 \end{pmatrix}, \text{ where } k \text{ is a constant}$$

(a) show that $\det(A) > 0$ for all real values of k . (3)

(b) find A^{-1} in terms of k . (2)

$$\begin{aligned} \text{(a) } \det(A) &= k(k+2) + 3 = k^2 + 2k + 3 \\ &= (k+1)^2 + 2 \end{aligned}$$



Also, $\frac{d}{dk} (k^2 + 2k + 3) = 2k + 2$

$$\therefore \frac{d}{dk} [\det(A)] = 2k + 2 = 0$$

$$\Rightarrow k = -1$$

$$k = -1 \Rightarrow \det(A) = 2 \Rightarrow \left. \begin{array}{l} \text{Min. point} \\ \text{is } (-1, 2) \end{array} \right\} \det(A) \geq 2 > 0$$

$\therefore \det(A) > 0$ for all k

$$\text{(b) } A^{-1} = \frac{1}{k^2 + 2k + 3} \begin{pmatrix} k+2 & -3 \\ 1 & k \end{pmatrix}$$



DO NOT WRITE IN THIS AREA

DO NOT WRITE IN THIS AREA

DO NOT WRITE IN THIS AREA

PM

DO NOT WRITE IN THIS AREA

DO NOT WRITE IN THIS AREA

DO NOT WRITE IN THIS AREA

5.

$$2z + z^* = \frac{3+4i}{7+i}$$

Find z , giving your answer in the form $a + bi$, where a and b are real constants. You must show all your working. (5)

$$5. \text{ RHS} = \frac{3+4i}{7+i} = \frac{(3+4i)(7-i)}{(7+i)(7-i)}$$

$$= \frac{21+25i-4i^2}{50} = \frac{25+25i}{50}$$

$$= \frac{1}{2} + \frac{1}{2}i$$

$$\therefore \text{LHS} = 2z + z^* = 2(a+bi) + a-bi$$

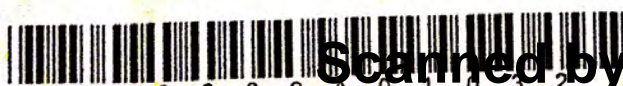
$$= 3a + bi$$

$$\text{LHS} = \text{RHS} \Rightarrow 3a + bi = \frac{1}{2} + \frac{1}{2}i$$

$$\therefore 3a = \frac{1}{2} \Rightarrow a = \frac{1}{6}$$

$$b = \frac{1}{2}$$

$$\therefore z = \frac{1}{6} + \frac{1}{2}i$$



6. The rectangular hyperbola H has equation $xy = 25$

(a) Verify that, for $t \neq 0$, the point $P\left(5t, \frac{5}{t}\right)$ is a general point on H . (1)

The point A on H has parameter $t = \frac{1}{2}$

(b) Show that the normal to H at the point A has equation

$$8y - 2x - 75 = 0 \quad (5)$$

This normal at A meets H again at the point B .

(c) Find the coordinates of B . (4)

6(a) P has parameters $x = 5t$, $y = \frac{5}{t}$

$$\therefore x_p y_p = 5t \times \frac{5}{t} = 25, \quad t \neq 0$$

$$\Rightarrow \text{For } P(x_p, y_p), \quad xy = 25$$

$\therefore P$ lies on H .

(b) $A\left(\frac{5}{2}, 10\right)$

$$y = 25x^{-1} \Rightarrow \frac{dy}{dx} = -25x^{-2} = -\frac{25}{x^2}$$

$$\text{@ } A, \quad \frac{dy}{dx} = -\frac{25}{\left(\frac{5}{2}\right)^2} = -4$$

$$\Rightarrow \text{Gradient of normal} = \frac{1}{4}$$

$$\therefore y - y_1 = m(x - x_1) \Rightarrow y - 10 = \frac{1}{4}\left(x - \frac{5}{2}\right)$$

DO NOT WRITE IN THIS AREA

DO NOT WRITE IN THIS AREA

DO NOT WRITE IN THIS AREA



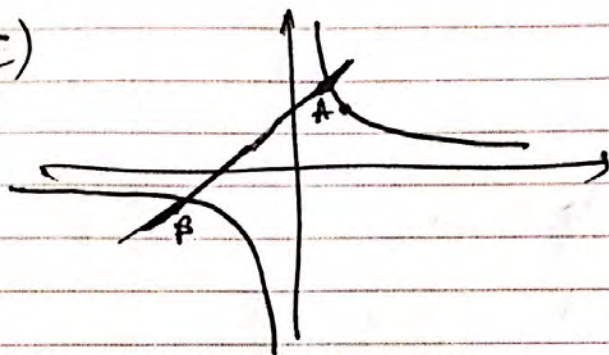
Question 6 continued

$$\therefore 4y - 40 = \frac{x-5}{2}$$

$$\textcircled{\times 2} \Rightarrow 8y - 80 = 2x - 5$$

$$\therefore \underline{8y - 2x - 75 = 0} \text{ as required.}$$

(c)



$$y = \frac{25}{x} \Rightarrow 8\left(\frac{25}{x}\right) - 2x - 75 = 0$$

$$\therefore \frac{200}{x} - 2x - 75 = 0$$

$$\textcircled{\times x} \Rightarrow 200 - 2x^2 - 75x = 0$$

$$\therefore 2x^2 + 75x - 200 = 0$$

$$\therefore (2x-5)(x+40) = 0$$

$$x = \frac{5}{2} \text{ @ A} \Rightarrow x_B = -40$$

$$\therefore y_B = \frac{25}{-40} = -\frac{5}{8}$$

$$\therefore \underline{B\left(-40, -\frac{5}{8}\right)}$$



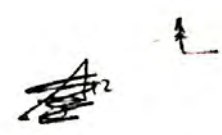
DO NOT WRITE IN THIS AREA

DO NOT WRITE IN THIS AREA

DO NOT WRITE IN THIS AREA

7.

$$P = \begin{pmatrix} \frac{5}{13} & -\frac{12}{13} \\ \frac{12}{13} & \frac{5}{13} \end{pmatrix}$$



(a) Describe fully the single geometrical transformation U represented by the matrix P . (3)

The transformation V , represented by the 2×2 matrix Q , is a reflection in the line with equation $y = x$

(b) Write down the matrix Q . (1)

Given that the transformation V followed by the transformation U is the transformation T , which is represented by the matrix R ,

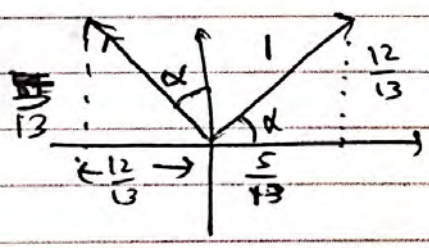
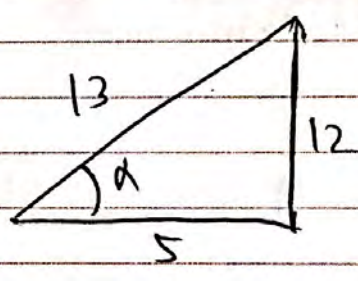
(c) find the matrix R . (2)

(d) Show that there is a value of k for which the transformation T maps each point on the straight line $y = kx$ onto itself, and state the value of k . (4)

(a)

$$\tan \alpha = \frac{12}{5}$$

$$\alpha = 67.4^\circ \text{ (3sf)}$$



U represents an anticlockwise rotation by $\arctan(\frac{12}{5}) = 67.4^\circ$ about the origin $(0, 0)$

Question 7 continued

$$(b) \begin{matrix} \uparrow \\ \downarrow \end{matrix} \Leftrightarrow \Leftrightarrow \Rightarrow Q = \begin{pmatrix} 0 & 1 \\ 1 & 0 \end{pmatrix}$$

$$(c) R = PQ$$

$$\therefore R = \begin{pmatrix} 5/13 & -12/13 \\ 12/13 & 5/13 \end{pmatrix} \begin{pmatrix} 0 & 1 \\ 1 & 0 \end{pmatrix}$$

$$= \begin{pmatrix} -12/13 & 5/13 \\ 5/13 & 12/13 \end{pmatrix}$$

$$(d) \mathbb{R} \begin{pmatrix} x \\ kx \end{pmatrix} = \begin{pmatrix} x \\ kx \end{pmatrix}$$

$$R^{-1} = \frac{1}{-1} \begin{pmatrix} 12/13 & -5/13 \\ -5/13 & -12/13 \end{pmatrix}$$

$$\therefore R^{-1} = \begin{pmatrix} -12/13 & 5/13 \\ 5/13 & 12/13 \end{pmatrix} = R$$

DO NOT WRITE IN THIS AREA

DO NOT WRITE IN THIS AREA

DO NOT WRITE IN THIS AREA



Question 7 continued

$$\therefore \begin{pmatrix} x \\ kx \end{pmatrix} = P^{-1} \begin{pmatrix} x \\ kx \end{pmatrix}$$

$$\therefore \begin{pmatrix} x \\ kx \end{pmatrix} = \begin{pmatrix} -12/13 & 5/13 \\ 5/13 & 12/13 \end{pmatrix} \begin{pmatrix} x \\ kx \end{pmatrix}$$

$$\therefore \begin{pmatrix} x \\ kx \end{pmatrix} = \begin{pmatrix} -\frac{12}{13}x + \frac{5}{13}kx \\ \frac{5}{13}x + \frac{12}{13}kx \end{pmatrix}$$

$$\therefore x = \cancel{x} k \left(\frac{5}{13}k - \frac{12}{13} \right)$$

$$\Rightarrow \frac{5}{13}k - \frac{12}{13} = 1$$

$$\Rightarrow k = 5$$

$\therefore T$ maps each point ~~into~~ ^{on} $y = kx$ onto itself for $k = 5$.

8.

$$f(z) = z^4 + 6z^3 + 76z^2 + az + b$$

where a and b are real constants.

Given that $-3 + 8i$ is a complex root of the equation $f(z) = 0$

(a) write down another complex root of this equation. (1)

(b) Hence, or otherwise, find the other roots of the equation $f(z) = 0$ (6)

(c) Show on a single Argand diagram all four roots of the equation $f(z) = 0$ (2)

8(a). $-3 - 8i$

(b) $[z - (-3 + 8i)][z - (-3 - 8i)]$

$$= z^2 - z(-3 - 8i) - z(-3 + 8i) + (-3 + 8i)(-3 - 8i)$$

$$= z^2 + 6z + 9 - 64i^2$$

$$= z^2 + 6z + 73 \quad \text{is a factor of } f(z)$$

$$\therefore f(z) = (z^2 + 6z + 73)(z^2 + uz + v)$$

$$= z^4 + uz^3 + vz^2 + 6z^3 + 6uz^2 + 6vz$$

$$+ 73z^2 + 73uz + 73v$$

$$= z^4 + (u+6)z^3 + \begin{pmatrix} v+6u \\ +73 \end{pmatrix} z^2$$

$$+ (6v + 73u)z + 73v$$

compare coeffs: z^3

$$\Rightarrow u+6 = 6 \Rightarrow u = 0$$

DO NOT WRITE IN THIS AREA

DO NOT WRITE IN THIS AREA

DO NOT WRITE IN THIS AREA



Question 8 continued

$$v=0 \Rightarrow f(z) = z^4 + 6z^3 + (v+73)z^2 + 6vz + 73v$$

Compare coeffs z^2 :

$$v+73=76 \Rightarrow v=3$$

$$\therefore f(z) = z^4 + 6z^3 + 76z^2 + 18z + 219$$

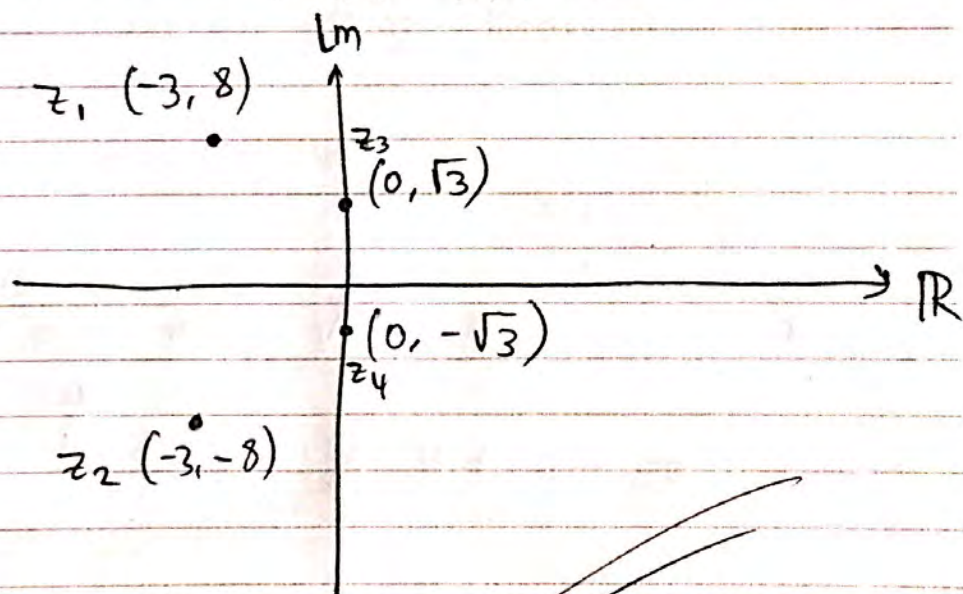
$$\Rightarrow a=18$$

$$b=219$$

$$z^2+3=0 \Rightarrow z = \pm i\sqrt{3}$$

(C) z^2+3 is another factor

$$\Rightarrow z = \pm i\sqrt{3}$$



(Total 9 marks)

Q8

9. The quadratic equation

$$2x^2 + 4x - 3 = 0$$

has roots α and β .

Without solving the quadratic equation,

(a) find the exact value of

(i) $\alpha^2 + \beta^2$

(ii) $\alpha^3 + \beta^3$

(5)

(b) Find a quadratic equation which has roots $(\alpha^2 + \beta)$ and $(\beta^2 + \alpha)$, giving your answer in the form $ax^2 + bx + c = 0$, where a , b and c are integers.

(4)

$$Q(a)(i) \quad (x-\alpha)(x-\beta) = \frac{2x^2+4x-3}{2} = x^2+2x-\frac{3}{2}$$

$$\therefore x^2 - \beta x - \alpha x + \alpha\beta = x^2 + 2x - \frac{3}{2}$$

$$\therefore x^2 - (\alpha + \beta)x + \alpha\beta = x^2 + 2x - \frac{3}{2}$$

$$\therefore (\alpha + \beta) = -2$$

$$\alpha\beta = -\frac{3}{2}$$

$$(\alpha + \beta)^2 = \alpha^2 + \beta^2 + 2\alpha\beta$$

$$\therefore \alpha^2 + \beta^2 = (\alpha + \beta)^2 - 2\alpha\beta$$

$$\therefore \alpha^2 + \beta^2 = 4 - 2\left(-\frac{3}{2}\right) = 4 + 3 = 7$$

$$\therefore \alpha^2 + \beta^2 = 7$$

DO NOT WRITE IN THIS AREA

DO NOT WRITE IN THIS AREA

DO NOT WRITE IN THIS AREA



Question 4 continued

$$(ii) (\alpha + \beta)^3 = \alpha^3 + \beta^3 + 3\alpha\beta^2 + 3\beta\alpha^2$$

$$= \alpha^3 + \beta^3 + 3\alpha\beta(\alpha + \beta)$$

$$\therefore \alpha^3 + \beta^3 = (\alpha + \beta)^3 - 3\alpha\beta(\alpha + \beta)$$

$$\therefore \alpha^3 + \beta^3 = -8 - 9 = -17$$

$$(b) [x - (\alpha^2 + \beta)] [x - (\beta^2 + \alpha)]$$

$$= x^2 - x(\beta^2 + \alpha) - x(\alpha^2 + \beta) + (\alpha^2 + \beta)(\beta^2 + \alpha)$$

$$= x^2 - (\alpha^2 + \beta^2 + \alpha + \beta)x + \alpha^2\beta^2 + \alpha^3 + \beta^3 + \alpha\beta$$

$$= x^2 - (7 - 2)x + \frac{9}{4} - 17 - \frac{3}{2}$$

$$= x^2 - 5x - \frac{65}{4} = 0$$

$$\therefore 4x^2 - 20x - 65 = 0$$

$$a = 4$$

$$b = -20$$

$$c = -65$$

10. (i) A sequence of positive numbers is defined by

$$u_1 = 5$$

$$u_{n+1} = 3u_n + 2, \quad n \geq 1$$

Prove by induction that, for $n \in \mathbb{Z}^+$,

$$u_n = 2 \times (3)^n - 1 \quad (5)$$

(ii) Prove by induction that, for $n \in \mathbb{Z}^+$,

$$\sum_{r=1}^n \frac{4r}{3^r} = 3 - \frac{(3+2n)}{3^n} \quad (6)$$

10(i). When $n=1$, $u_1 = 2 \times (3)^1 - 1 = 6 - 1 = 5$

$\therefore u_1 = 5$ is correct as given.

\therefore result is true for $n=1$.

When $n=k$, let us assume,

$u_k = 2 \times (3)^k - 1$ is true.

Also, $n=k \Rightarrow u_{k+1} = 3u_k + 2$

$\therefore u_{k+1}$ is given by ...

$$u_{k+1} = 3[2 \times (3)^k - 1] + 2$$

$$= 6(3)^k - 1$$

$$= 2 \cdot 3 \cdot 3^k - 1 = 2(3)^{k+1} - 1$$



Question 10 continued

$$= 2 \times (3)^{k+1} - 1 \quad \text{as it should for } n=k+1 \text{ under } u_n = 2 \times (3)^n - 1$$

\therefore Result is shown true for $n=k+1$

If the result is true for $n=k$, it is shown to be true for $n=k+1$.
 Since it's true for $n=1$ it must be true for $n=2, 3, 4, 5, \dots$
 and all $n \in \mathbb{Z}^+$ by induction.

$$(i) \text{ When } n=1, \text{ LHS} = \sum_{r=1}^1 \frac{4r}{3^r} = \frac{4 \times 1}{3^1} = \frac{4}{3}$$

$$\text{RHS} = 3 - \frac{3+2}{3} = 3 - \frac{5}{3} = \frac{4}{3}$$

\therefore LHS = RHS is true for $n=1$.

\therefore result is true for $n=1$.

~~When~~, let's assume for $n=k$,

$$\text{LHS} = \sum_{r=1}^k \frac{4r}{3^r} = 3 - \frac{(3+2k)}{3^k} = \text{RHS}$$

is true.



Question 10 continued

When $n = k + 1$,

We must show

$$\text{LHS} = \sum_{r=1}^{k+1} \frac{4r}{3^r} = 3 - \frac{[3 + 2(k+1)]}{3^{k+1}}$$

$$= 3 - \frac{5 + 2k}{3^{k+1}}$$

Now when $n = k + 1$

$$\text{LHS} = \sum_{r=1}^{k+1} \frac{4r}{3^r} = \sum_{r=1}^k \frac{4r}{3^r} + \frac{4(k+1)}{3^{k+1}}$$

$$= 3 - \frac{(3 + 2k)}{3^k} + \frac{4(k+1)}{3^{k+1}}$$

$$= 3 - \frac{3(3 + 2k)}{3^{k+1}} + \frac{4(k+1)}{3^{k+1}}$$

$$= 3 + \frac{4k + 4 - 9 - 6k}{3^{k+1}} = 3 + \frac{-2k - 5}{3^{k+1}}$$

$$= 3 - \frac{5 + 2k}{3^{k+1}}$$

DO NOT WRITE IN THIS AREA

DO NOT WRITE IN THIS AREA

DO NOT WRITE IN THIS AREA



Question 10 continued

$$= 3 - \frac{3 + 2(k+1)}{3^{k+1}} \quad \text{as it should}$$

\therefore result is true for $n = k+1$

If ^{the} result is true for $n = k$, it is shown true for $n = k+1$, since it's true for $n = 1$, it must be true for $n = 2, 3, 4, \dots$ and all $n \in \mathbb{Z}^+$ by induction.

DO NOT WRITE IN THIS AREA

DO NOT WRITE IN THIS AREA

DO NOT WRITE IN THIS AREA